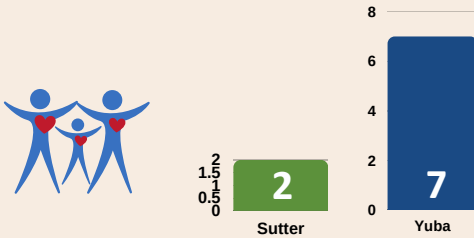




Regional Homeless Update December 2022

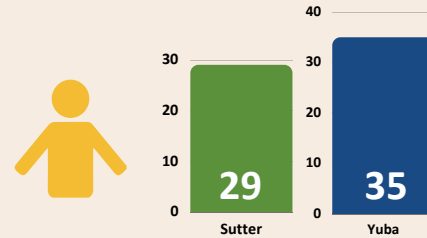
New Households with Children

Entered into HMIS



New Households Without Children

Entered into HMIS



Total clients entering the CE System: 147

Households Connected to Shelter



December 2022

- 14 Forward: 16
- Better way: 10
- Casa De Esperanza: 5
- Life Building Center: 21
- The Depot: 0
- The Mission: 25

List of SYHC Partner Agencies can be found at: <https://www.syhomelessconsortium.org/our-partners>

Top 3 Reasons for Becoming Homeless

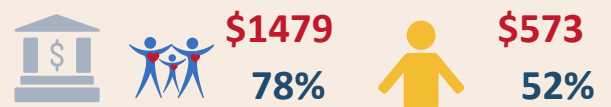
- Unable to pay Rent or Mortgage
- Lost Job/Unemployed
- Substance Use Issues

Percentage of renters overburdened:

Yuba: 53.9% Sutter: 53.4%

Pulled data on renters overburdened from:
<https://affordablehousingonline.com/housing-search/California>

Homeless Average Monthly Income & Percentage with Income



Percentage with Medical Benefits 83%

Vacancy rate:

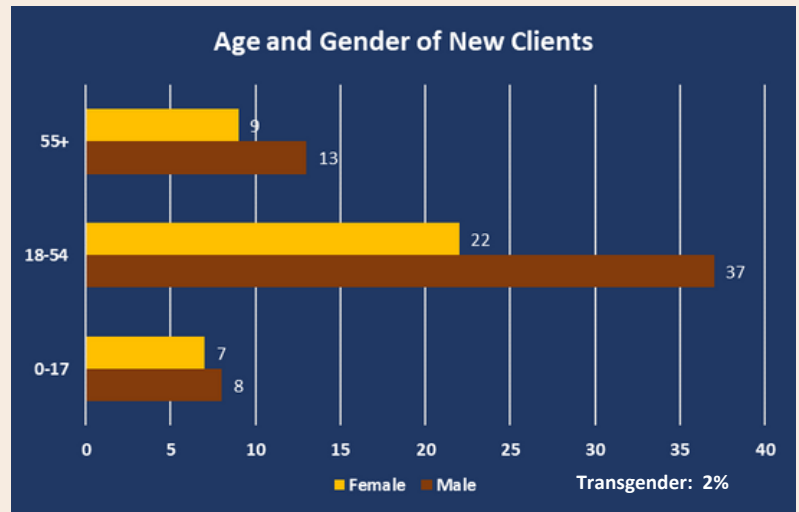
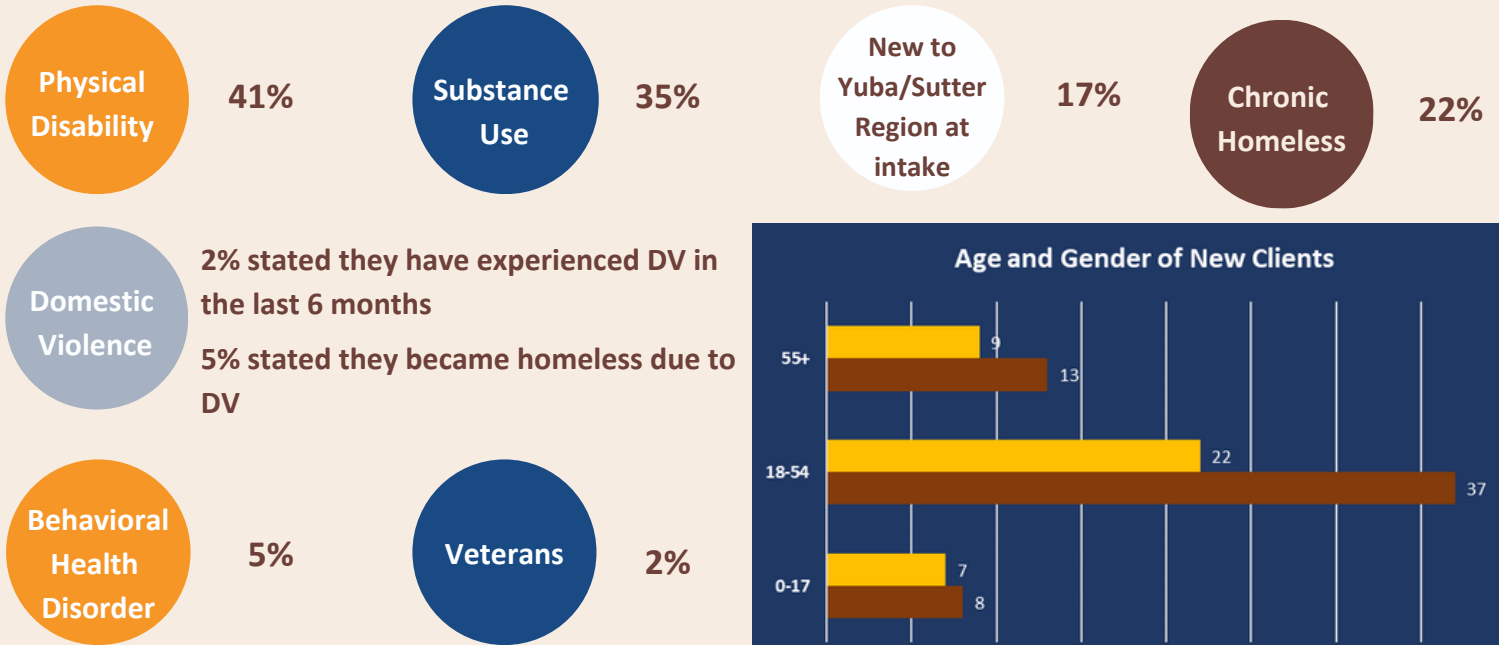
Yuba: 8% Sutter: 5%

Pulled vacancy rate from:
<https://www.towncharts.com/California/Housing/Sutter-County-CA-Housing-data.html>



Regional Homeless Update December 2022

Demographics



Life Skills

Classes

- Anger Management
- Applications and Presentation
- Computer Lab
- Diabetes Education
- Effective communication
- Effective Interviewing
- Employment Readiness
- Employment training
- Harm Reduction
- Housing Skills
- Job Searching
- Job Training
- Living in Balance
- Nutrition
- Ready to Rent*
- Self Discovery/People Skills
- Team Building
- Time & Money Management
- Understanding Employment and Your SSI

Services

- Ampla Health Outreach
- Behavioral Health
- Community Connect
- Counseling
- Domestic Violence Outreach
- Educational Outreach
- Hair Cuts
- Health and Human Services
- Legal Assistance *
- Medical Benefit Enrollment
- Support Group *
- Street Nurses

Yuba County

Sutter County

Both Counties

*Classes and services that are on hold due to Covid-19

Monthly Offered and Attended



Sutter:
Offered: 8
Attendees: 104

Yuba:
Offered: 21
Attendees: 110

Sutter County offers additional classes for their homeless families offsite.

Classes: Teaching self-sufficiency skills
Services: Providing on-site assistance

All data is self disclosed

*Household = Family Unit or Unaccompanied Individual
New figures reflected are due to data quality improvement